

Customer :

customer

Customer part :

customer part

Comment :

Comment

S1=4.72

S2=3.88

Tmax=456

Tp S2=495.0

PI=0.55

HI=91

Sample =1736.30

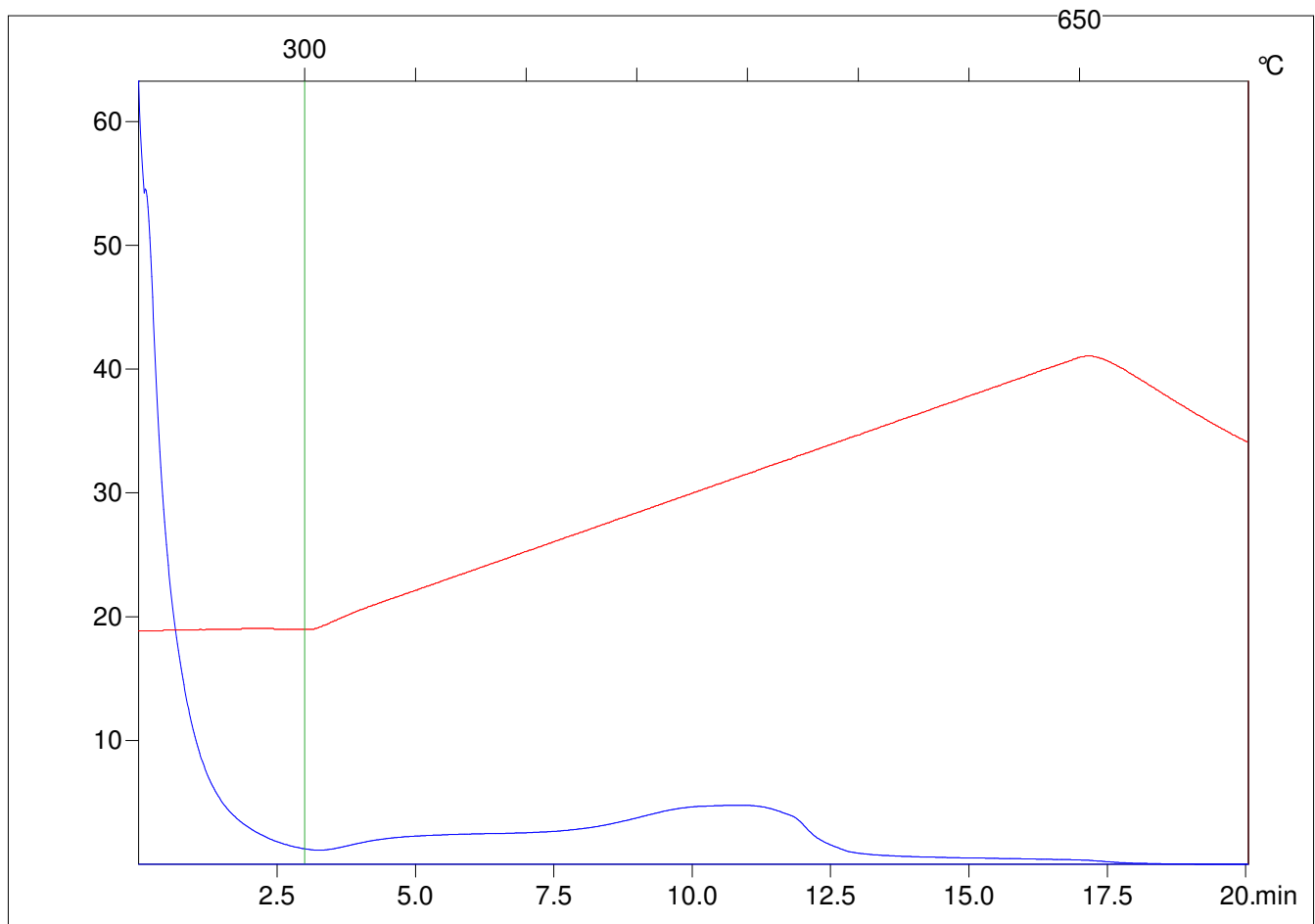
Method =Bulk Rock

Cycle=Basic

KFID(10\*9)=1444

Qty =70.0

TOC=4.28



C:\VINC\PK2\_1792\PK063.R00 : FID pyrolysis graphic

State

Pyro Status

Oxi Status